

# BETHEL LUTHERAN CHURCH

*Jesus the Light of the World*

FIRST SUNDAY IN LENT

FEBRUARY 22ND, 2026

**8:30 AM & 10:30 AM**

*+ indicates to stand in body or spirit;  
**bold print** indicates congregational responses*

## ✠ GATHERING ✠

**PRELUDE** *"Come Thou Font of Every Blessing"* arr. Jody Ann Tomlin

### WORDS OF WELCOME

### + CONFESSION & FORGIVENESS

Blessed be the holy Trinity, ✠ one God,  
who forgives all our sin, whose mercy endures forever. **Amen.**

Almighty God, to whom all hearts are open, all desires known, and from whom no secrets are hid:  
cleanse the thoughts of our hearts by the inspiration of your Holy Spirit,  
that we may perfectly love you and worthily magnify your holy name,  
through Jesus Christ our Lord. **Amen.**

Let us confess our sin in the presence of God and of one another.

Most merciful God,

**we confess that we are captive to sin and cannot free ourselves.**

**We have sinned against you in thought, word, and deed,**

**by what we have done and by what we have left undone.**

**We have not loved you with our whole heart;**

**we have not loved our neighbors as ourselves.**

**For the sake of your Son, Jesus Christ, have mercy on us.**

**Forgive us, renew us, and lead us,**

**so that we may delight in your will**

**and walk in your ways, to the glory of your holy name. Amen.**

In the mercy of almighty God, Jesus Christ was given to die for us,  
 and for his sake God forgives us all our sins.  
 As a called and ordained minister of the church of Christ, and by his authority,  
 I therefore declare to you the entire forgiveness of all your sins,  
 in the name of the Father, and of the  $\text{✝}$  Son, and of the Holy Spirit. **Amen.**

Lord, you are the light of the world,  
**and the light of your life is a lamp unto our feet.**

+ GATHERING HYMN "O God of Light" ELW #507



1. O God of light, your word, a lamp un - fail - ing,  
 2. From days of old, through blind and will - ful a - ges,  
 3. Un - dimmed by time, those words are still re - veal - ing  
 4. To all the world your sum - mons you are send - ing,

shall pierce the dark - ness of our earth-bound way  
 though we re - belled, you gent - ly sought a - gain,  
 to sin - ful hearts your jus - tice and your grace;  
 through all the earth, to ev - 'ry land and race,

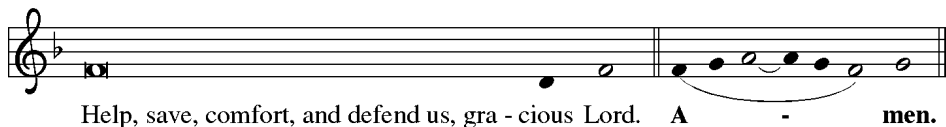
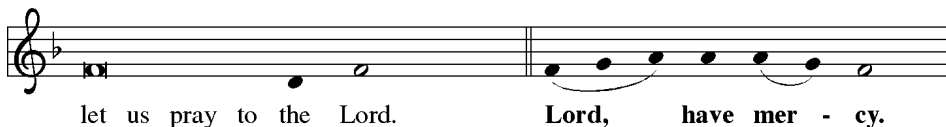
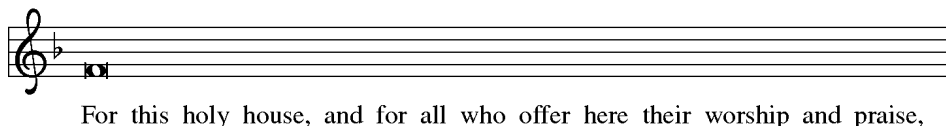
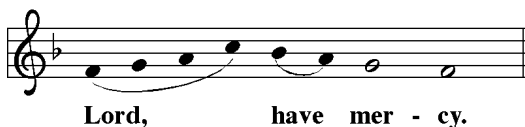
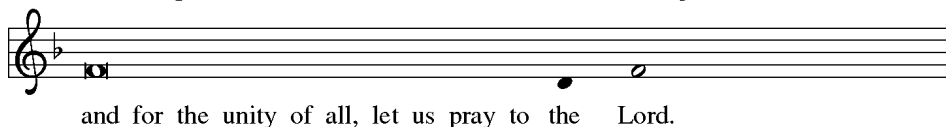
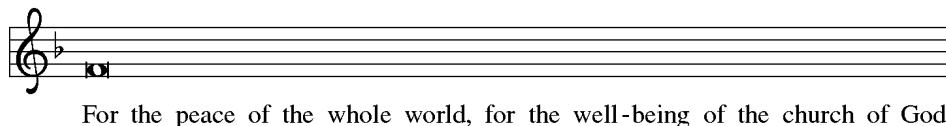
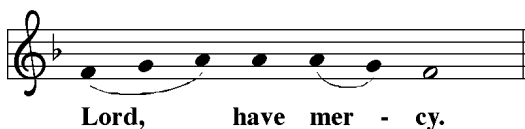
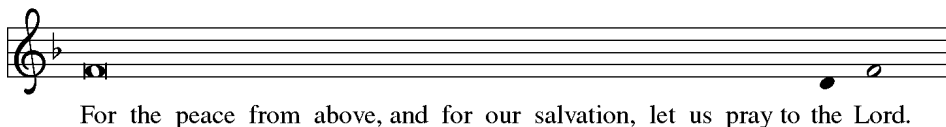
and show your grace, your plan for us un - veil - ing,  
 and spoke through saints, a pos - tles, proph - ets, sa - ges,  
 and quest - ing spir - its, long - ing for your heal - ing,  
 that myr - iad tongues, in one great an - them blend - ing,

and guide our foot - steps to the per - fect day.  
 who wrote with ea - ger or re - luc - tant pen  
 see your com - pas - sion in the Sav - ior's face.  
 may praise and cel - e - brate your gift of grace.

## + APOSTOLIC GREETING

The grace of our Lord Jesus Christ, the love of God,  
and the communion of the Holy Spirit be with you all. **And also with you.**

## + KYRIE



## PRAYER OF THE DAY

**O Lord God, you are the light of the world. Help us, when we are lost in the darkness to follow you into the light of life. Make us your light bearers in this world, that all may know and bask in the light of your love, justice, and peace. In the name of Jesus Christ, our Savior and Lord, we pray. Amen.**

*(10:30) At this time, children age 3 – grade 5 are invited to go to Sunday School.  
They will return to the sanctuary before communion.*

## ✠ WORD ✠

### PSALM *PSALM 18:25-30*



<sup>25</sup>With the faithful you show yourself faith- | ful, O God;  
with the blameless you show | yourself blameless.

<sup>26</sup>**With the pure you show | yourself pure,  
but with the crooked | you are wily.**

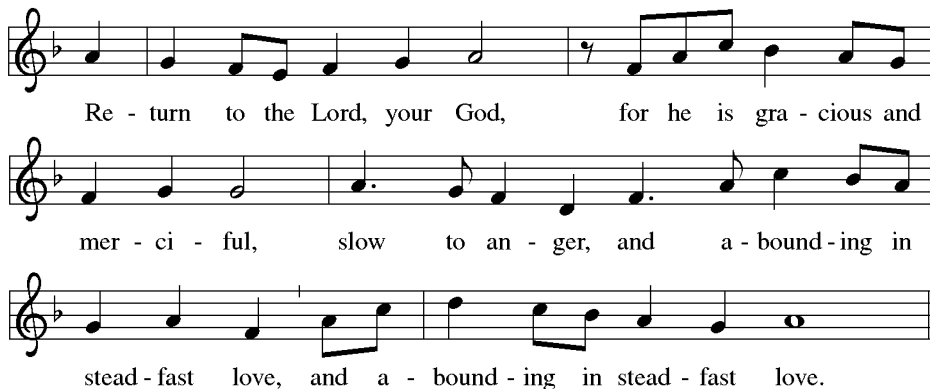
<sup>27</sup>Indeed, you will save a | lowly people,  
but you will humble the | haughty eyes.

<sup>28</sup>**Surely you, O Lord, | light my lamp;  
my God makes my | darkness bright.**

<sup>29</sup>With you I will break down | an enclosure;  
with the help of my God I will scale | any wall.

<sup>30</sup>**Your way, O God, is perfect; your word is re- | fined in fire;  
you are a shield to all who | trust in you.**

### + GOSPEL ACCLAMATION



+ **HOLY GOSPEL** *JOHN 8:12-20*

The Gospel according to John. **Glory to you, O Lord.**

<sup>12</sup> Again Jesus spoke to them, saying, “I am the light of the world. Whoever follows me will never walk in darkness but will have the light of life.” <sup>13</sup> Then the Pharisees said to him, “You are testifying on your own behalf; your testimony is not valid.” <sup>14</sup> Jesus answered, “Even if I testify on my own behalf, my testimony is valid because I know where I have come from and where I am going, but you do not know where I come from or where I am going. <sup>15</sup> You judge by human standards; I judge no one. <sup>16</sup> Yet even if I do judge, my judgment is valid, for it is not I alone who judge but I and the Father who sent me. <sup>17</sup> In your law it is written that the testimony of two witnesses is valid. <sup>18</sup> I testify on my own behalf, and the Father who sent me testifies on my behalf.” <sup>19</sup> Then they said to him, “Where is your Father?” Jesus answered, “You know neither me nor my Father. If you knew me, you would know my Father also.” <sup>20</sup> He spoke these words while he was teaching in the treasury of the temple, but no one arrested him, because his hour had not yet come.

The Gospel of our Lord. **Praise to you, O Christ.**

**HOMILY**

+ **HYMN OF THE DAY** “*Christ, You Are Light*” VT #271

Christ, you are light for those who fol - low you. You

come to bring to all the light of life.

## PRAYERS OF THE PEOPLE

Lord, in your mercy, **hear our prayer.**

## + SHARING OF THE PEACE

The peace of Christ be with you always. **And also with you.**

## OFFERING



Guests

Generosity is part of who we are as God's people. Guests can use their QR code to give via Breeze, Bethel's trusted online giving platform. Select "Member Faith Giving" to give to the general budget. Members can use their QR code to sign into Breeze to give a one-time gift or to schedule an automated donation. Online giving cards (at the name tag stations), checks, or cash may be placed in the offering plates as they are passed.



Members

**ANTHEM (8:30)** *"The Light on the Hill"* Rebecca Oswald

**ANTHEM (10:30)** *"Light of a Clear Blue Morning"* Dolly Parton; as performed by the Wailin' Jennys

## + OFFERTORY *"Fill Us with Your Feast"* VT #309



### *Refrain*

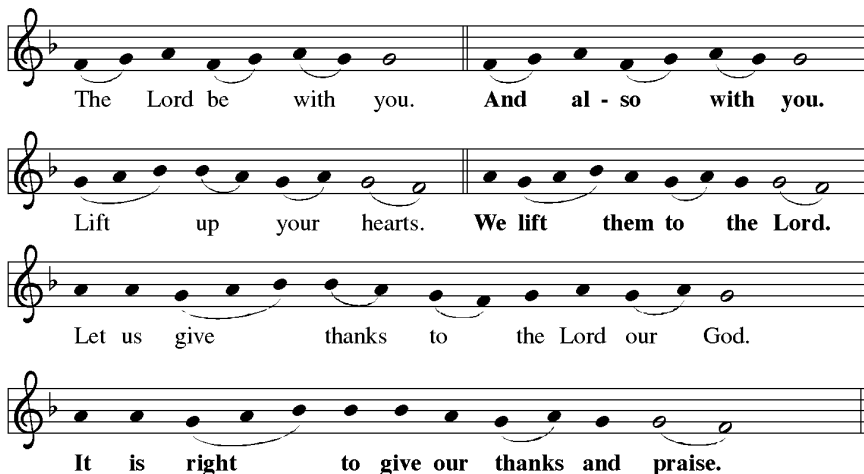


## + OFFERTORY PRAYER

O God who gave us life, and in whose arms we die,  
you know us as we are, understand what we have been, and see what we shall become.  
We give you back our lives that you may make them new:  
generous, committed to hope, and fearless to do your will;  
that your whole creation may live to praise your name now and forever. **Amen.**

## ✠ MEAL ✠

## + GREAT THANKSGIVING



## + EUCHARISTIC PRAYER

Holy God, we sing the praise of your creations: wheat and donkey, perfume and palms. You wash the mud from our eyes when focus falters; you abide with us in doubt and darkness; you comfort us in the places where the stench of death still lingers. Mighty and merciful God, unbind our apathy. Call us from our graves of certainty and ambition. Teach us to counter cruelty with tenderness.

*The Words of Institution / Las Palabras de la Institución*

You are the grain of wheat, bearing fruit in death. You are the shepherd who laid down his life. You passed through the gate of death so that we could graze with you in eternal life. As we eat this bread and drink this wine, may the Spirit that passes all understanding grant us the courage to see that your body still walks among us: in the patient, the prisoner, the immigrant, and the stranger. May this meal strengthen us to love others as you have loved us. **Amen.**

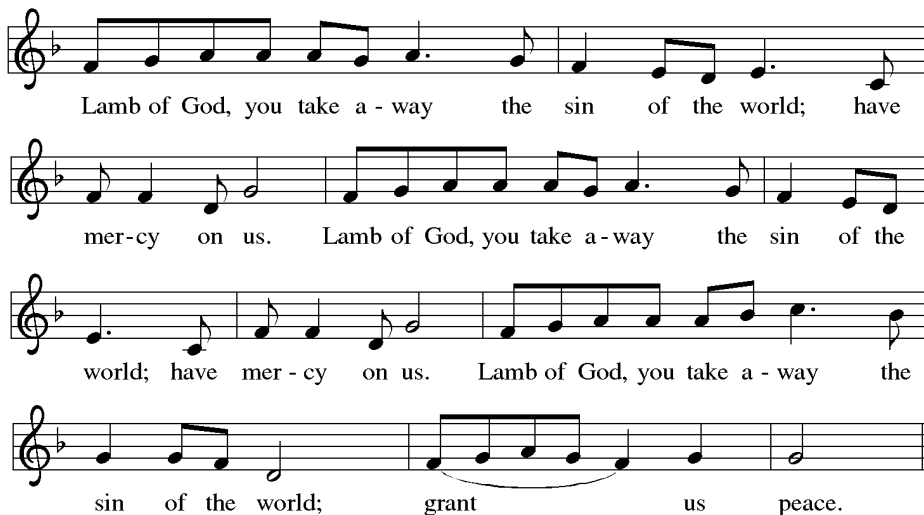
## + THE LORD'S PRAYER

Our Father in heaven,  
hallowed be your name,  
your kingdom come, your will be done,  
on earth as in heaven.  
Give us today our daily bread.  
Forgive us our sins  
as we forgive those  
who sin against us.  
Save us from the time of trial  
and deliver us from evil.  
For the kingdom,  
the power, and the glory  
are yours, now and forever. Amen.

## + EL PADRE NUESTRO

Padre nuestro que estás en los cielos,  
santificado sea tu nombre;  
venga a nos tu reino; hágase tu voluntad,  
así en la tierra como en el cielo;  
el pan nuestro de cada día, dánoslo hoy;  
y perdónanos nuestras deudas  
así como nosotros perdonamos  
a nuestros deudores;  
y no nos dejes caer en la tentación;  
mas líbranos del mal.  
Porque tuyo es el reino,  
el poder y la gloria,  
por los siglos de los siglos. Amén.

## LAMB OF GOD



Lamb of God, you take a - way the sin of the world; have  
mer-cy on us. Lamb of God, you take a - way the sin of the  
world; have mer - cy on us. Lamb of God, you take a - way the  
sin of the world; grant us peace.

## HOLY COMMUNION ANTHEM

(8:30) *"Light of a Clear Blue Morning"* Dolly Parton; as performed by the Wailin' Jennys  
(10:30) *"The Light of the World is Jesus"* arr. Mark Hayes

## + TABLE BLESSING

The body and blood of our Lord Jesus Christ strengthen you and keep you in his grace. **Amen.**



## + PRAYER AFTER COMMUNION


God of our salvation, we give you thanks for this meal that restores our souls, reconciles us to you, and strengthens us for the journey. Through the body and blood of your Son, may we become Christ's body in the world, bearing witness to your love for all creation, through Jesus Christ, our Savior and Lord. Amen.

## ✠ SENDING ✠

### + BENEDICTION

May God who has called us forth from the dust of the earth,  
and claimed us as children of the light,  
strengthen you on your journey to life renewed.  
Almighty God, motherly, majestic, and mighty,  
✠ bless you this day and always. **Amen.**

### + SENDING HYMN "O God of Light, May Our Light Shine" SOG #17



1. O God of light, may our light shine In  
2. God, where your peo - ple are op - pressed And  
3. Christ, when your way is pushed a - side By  
4. O Spir - it, in this world of doubt, We

ways that serve and hon - or you. May we be lov - ing,  
where they cry out in des - pair, Make us your light, to  
those who trust in wealth and might, Make us your lamps that  
of - ten sin and drift a - way. When our own faith is

just and kind, Pro - claim - ing Christ in all we do.  
heal, to bless, A wit - ness, Lord, that you are there.  
we may guide A search - ing world to your love's light.  
flick - ring out, Shine on our path and light our way.

### + DISMISSAL

Go in peace to love and serve the Lord. **Thanks be to God!**

**POSTLUDE** "I Want Jesus to Walk with Me" arr. Michael Bedford

## **WORSHIP LEADERS**

Pastor Inger Hanson & Pastor Ben Schori  
Acolytes: (8:30) Connor Dahl (10:30) Ingrid Jorgenson  
Assisting Minister: (8:30) Janice Lehmkuhl (10:30) Rebecca Nystuen  
Ushers: (8:30) Shea Engle, Ruby Dahl, Hannah Broughton  
(10:30) Matteus Jothan, Marie Halvorson, Denise Halvorson, Kristi Larson  
Readers: (8:30) Ben Haefner (10:30) Abby Atzinger  
Sacramental Ministers: (8:30) Elizabeth McCormick, Phil Ruud, Kristi Larson, Shea Engle, Ben Haefner  
(10:30) Kristi Larson  
Altar Care: (set) (clean) Phyllis Larson (cups) Cynthia Carau  
Harp: Sarah Swan McDonald Flute: Krista Middlebrooks  
Church Choir Director: Peter Schleif  
Rainbow Singers: Rebecca Nystuen, Ellen Haefner, Joanna McLees, Catherine Engle,  
Kristi Larson, Megan Engel, Krista Middlebrooks  
Keyboards: Megan Engel  
A/V Technicians: Sam Dwyer, Asher Engle, Nathan Broughton, Nathan Hoekstra

## **ACKNOWLEDGMENTS**

We are using ELW Setting Three for our liturgy.

The Prayer of the Day is adapted from ELW Year C prayers for Lectionary 15 and 16.

Psalm Setting by Ronald A. Nelson, from *ELW Psalter for Worship, Year A* © 2007 Augsburg Fortress.

*“Christ, You Are Light”* Text and Music Taizé Community © 2007, admin. GIA Publications, Inc.

*“Fill Us With Your Feast”* Text and Music: Phil Campbell-Enns, © 2005.

*“O God of Light, May Our Light Shine”* Text: Carolyn Winfrey Gillette, © 2005.  
Music: CANONBURY, adapt. Robert Schumann, 1839.

The Offering prayer is written by Janet Morley, as found in her book  
*All Desires known* © 2006 Moorhouse Publishing; New York.

The Eucharistic prayer for Lent 2026 is by Kaethe Schwenn.

The benediction is modified from Sundays & Seasons 2018 and 2022.

Portions of the liturgy are reprinted from Evangelical Lutheran Worship,  
© 2006 Augsburg Fortress. Used by permission of Augsburg Fortress license SB143519

Other liturgical aids are from Sundays and Seasons © 2026

Other music is used with permission  
under OneLicense.net license #A703881 or CCLI license #2666099

## SUNDAY ATTENDANCE

February 15	in person attendance
8:30	132
10:30	135
Total	267

### NEXT SUNDAY...

The text of the day  
will be **John 9:1-41** (with Psalm 27:1-4).

## TODAY!

- A staffed nursery for little ones is available during and between worship services.
- 9:40—10:25 am Coffee Fellowship (CLC) and Faith Formation opportunities:  
    **Kids' & Youth Fellowship** (Center Pod & Youth Room)  
    Bethel Presents: *Meet the Author: Bethel's Kaethe Schwenn*
- **Sunday School** offered during the 10:30 am worship service (*children Age 3—Grade 5 are invited to go with Kristi after the prayer of the day and will rejoin parents prior to communion.*)

## **Bethel Lutheran Church Shares Christ's Love with a Big Heart**

Called by the gospel of Jesus Christ, Bethel celebrates all people as children of God.

We welcome you: your age, ability, and education;  
                    your race, ethnicity, and citizenship;  
your sexual orientation, gender identity and expression;  
                    your relationship status and family structure.

                    Your uniqueness is valued.  
Your questions and doubts have a home here.

Our work of welcome includes loving, forgiving, and serving one another;  
advocating for those who are marginalized and oppressed;  
                    striving for racial equity and economic justice;  
                    and caring for the earth and all of God's creation.



We invite you to fully participate in the life of Bethel.



## THIS WEEK—FEBRUARY 23—28

CHURCH OFFICE HOURS: MONDAY—THURSDAY 9 AM - 3 PM



### MONDAY

- 12:00 pm  Bible Study @ the Vault (1520 Clinton Lane)
- 5:00 pm Children Youth & Family Advisory Board
- 6:30 pm  Resonance Bell Choir (Adults)

### TUESDAY

- 9:00 am  Quilting Group
- 9:45 am Staff Meeting

### WEDNESDAY

- 11:30 am Lenten Midday Worship & Soup Lunch
- 3:30 pm Limitless
- 5:30 pm Lenten Soup Supper
- 6:15 pm Ring Forth Youth Bell Choir
- 6:30 pm Joyous Light Lenten Evening Prayer *with harp music beginning at 6:15 pm, and following the service. Please enter and depart quietly for those taking part in the extended worship option.*
- 7:00 pm  Church Choir Rehearsal
- 6th Grade Connections
- Confirmation 7th—9th Grades
- Hangtime
- 8:05 pm  Brio Youth Bell Choir

### THURSDAY

- 8:30 am MoB (Men of Bethel) (Room 54)
- 9:30 am FaB (Faith & Books) (Youth Room)
- 10:30 am Projects with Purpose

### FRIDAY

- 9:15 am  WoW (Women of the Word) via zoom



1321 North Avenue, Northfield, MN 55057  
www.bethelnorthfield.org | 507.786.6674

