



## BETHEL LUTHERAN CHURCH

ASH WEDNESDAY

FEBRUARY 18TH, 2026

**11:00AM & 7:00PM**

*+ indicates to stand in body or spirit; **bold print** indicates congregational responses*

### ✠ GATHERING ✠

*Ash Wednesday is a solemn day of prayer that begins the season of Lent. On this day we confess our sin in a litany of repentance. During Lent's forty days we are invited to carry out the Lenten discipline, practices of fasting, prayers, and works of love, even as we accompany people around the world who are preparing for baptism at Easter. On this day we may receive the sign of ashes. This ancient symbol of repentance reminds us of our mortality. Returning to God's mercy and grace, marked with the cross of Christ, we make our way through Lent, longing for the baptismal waters of Easter, our spiritual rebirth.*

**PRELUDE** "I Want Jesus to Walk with Me" arr. Thomas Keesecker

**WORDS OF WELCOME**

**+ OPENING LITANY**

In our doubt and fear, may we know the compassion of the Shepherd,  
**who tends us in the valley of shadows and will sit with us as long as we need.**

In our anger and frustration, may we know the passion of the Prophet,  
**who overturns the tables of injustice and curses this fruitless age.**

In our pain and despair, may we know the healing of the Comforter,  
**who strengthens us with hope that is stronger than death.**

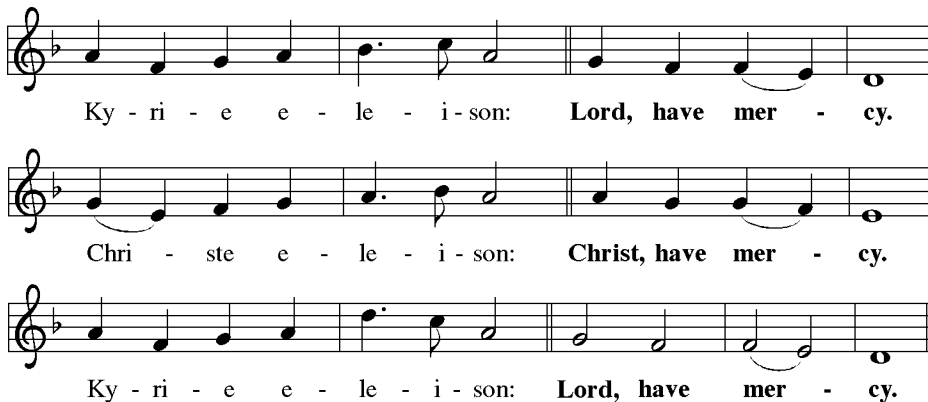
Make us a community of costly and courageous love,  
**overcoming destruction and injustice wherever we may find it.**

We pray in solidarity  
with those whose hearts and bodies are aching today.

*(silence)*

By the tender mercy of our God, may the dawn from on high break upon us,  
to give light to those who sit in shadows, and to guide our feet in the way of peace. **Amen.**

#### + KYRIE



Ky - ri - e e - le - i - son: **Lord, have mer - cy.**

Chri - ste e - le - i - son: **Christ, have mer - cy.**

Ky - ri - e e - le - i - son: **Lord, have mer - cy.**

#### + APOSTOLIC GREETING

The grace of our Lord Jesus Christ, the love of God,  
and the communion of the Holy Spirit be with you all. **And also with you.**


#### + PRAYER OF THE DAY

Gracious God, out of your love and mercy you breathed into dust the breath of life,  
creating us to serve you and our neighbors. Call forth our prayers and acts of kindness,  
and strengthen us to face our mortality with confidence in the mercy of your Son,  
Jesus Christ, our Savior and Lord, who lives and reigns with you and the Holy Spirit,  
one God, now and forever. **Amen.**

# ✠ WORD ✠

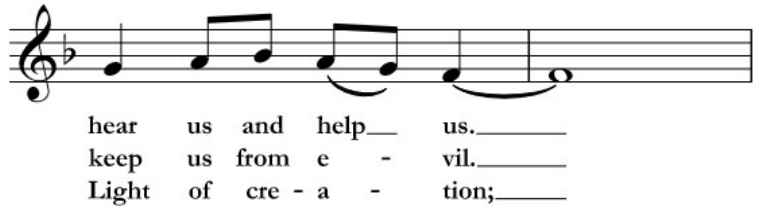
**PSALM** PSALM 141 from "Joyous Light: Evening Prayer"

## Refrain



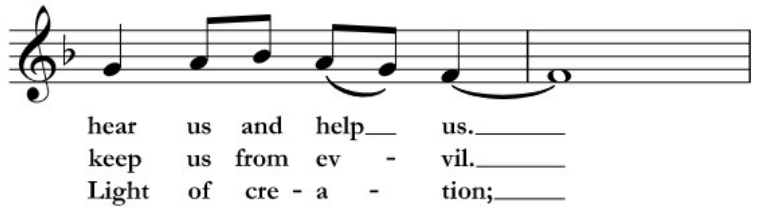
We lift\_\_ our hands in prayer like in - cense ris - ing\_\_  
 \_\_ and of-fer our lives to you, O\_\_ God.

1. *God, we call, for you are near:*
2. *Touch our lips, form ev'ry word:*
3. *As we turn our gaze to you:*



hear us and help\_\_ us.\_\_\_\_  
 keep us from e - vil.\_\_\_\_  
 Light of cre - a - tion;\_\_\_\_


1. *Be now among us here:*
2. *Unbind our hearts, O Lord:*
3. *and live our days with you:*



hear us and help\_\_ us.\_\_\_\_  
 keep us from ev - vil.\_\_\_\_  
 Light of cre - a - tion;\_\_\_\_

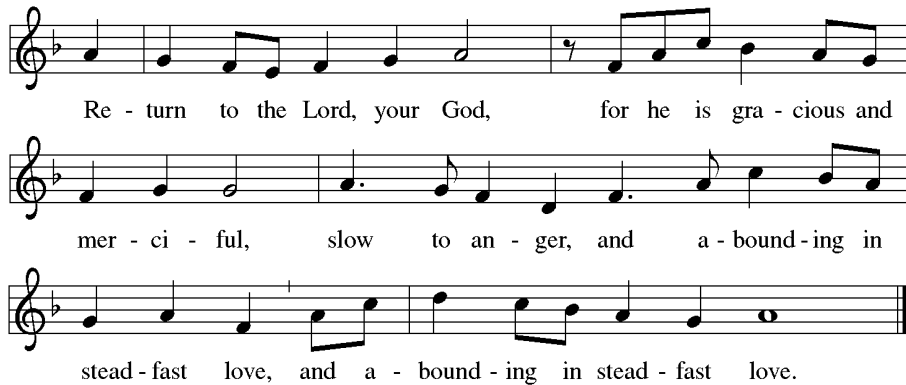
## to Refrain

1. *Be thou the loving ear:*
2. *Remind us we are restored:*
3. *and burn and blaze in you:*



hear us and help us\_\_ and all\_\_ who cry.  
 keep us from ev - vil\_\_ and all\_\_ its lies.  
 Light of cre - a - tion,\_\_ o - pen our eyes.

+ GOSPEL ACCLAMATION



Re - turn to the Lord, your God, for he is gra - cious and  
mer - ci - ful, slow to an - ger, and a - bound - ing in  
stead - fast love, and a - bound - ing in stead - fast love.

+ HOLY GOSPEL *JOHN 6:16-21*

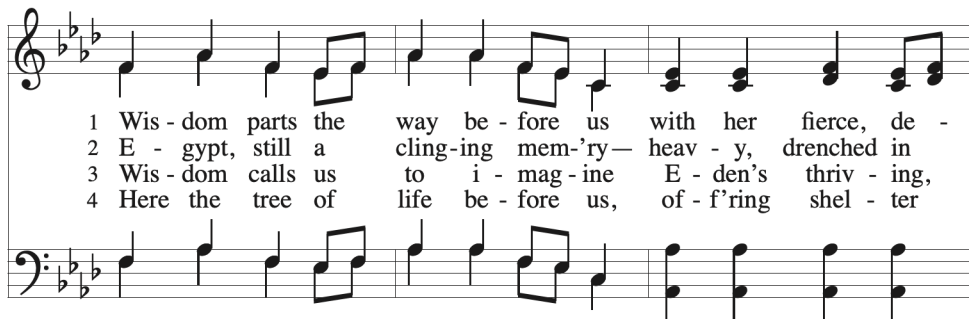
The holy gospel according to John. **Glory to you, O Lord.**

<sup>16</sup>When evening came, his disciples went down to the sea, <sup>17</sup>got into a boat, and started across the sea to Capernaum. It was now dark, and Jesus had not yet come to them. <sup>18</sup>The sea became rough because a strong wind was blowing. <sup>19</sup>When they had rowed about three or four miles, they saw Jesus walking on the sea and coming near the boat, and they were terrified. <sup>20</sup>But he said to them, "It is I; do not be afraid." <sup>21</sup>Then they wanted to take him into the boat, and immediately the boat reached the land toward which they were going.

The Gospel of our Lord. **Praise to you, O Christ.**

HOMILY

+ HYMN OF THE DAY *"Wisdom Parts the Way Before Us"*



1 Wis - dom parts the way be - fore us with her fierce, de -  
2 E - gypt, still a cling - ing mem - ry — heav - y, drenched in  
3 Wis - dom calls us to i - mag - ine E - den's thriv - ing,  
4 Here the tree of life be - fore us, of - f'ring shel - ter

ter - mined stride. She re - bukes the rag - ing wa - ters—  
 loss and fear— threat - ens to ex - haust our cour - age,  
 lush and green, lifts the rem - nants of our an - guish,  
 and sha - lom to the wea - ry, loved, and wel - comed.

our de - fend - er, hope, and guide.  
 weights our steps though hope stays near.  
 leads us through the gate un - seen.  
 Here we find our one true home.

## INVITATION TO LENT

Friends in Christ, we begin this holy season by acknowledging our need for repentance and for God's mercy.

We are created to experience joy in communion with God, to love one another, and to live in harmony with creation.

But our sinful rebellion separates us from God, our neighbors, and creation, so that we do not enjoy the life our creator intended.

As followers of Jesus, we are called to disciplines that contend against evil and resist whatever leads us away from love of God and neighbor.

I invite you, therefore, to the practices of Lent – prayer and fasting, self-examination and repentance, sacrificial giving and works of love.

In our efforts, we will be strengthened by the gifts of word and sacrament.

Let us journey together through these forty days

to the great Three Days of Jesus' death and resurrection.

Let us confess our sin in the presence of God and of one another.

*(silence)*

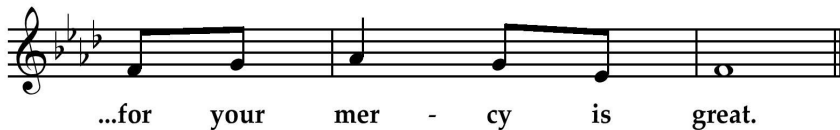
## CONFESSION OF SIN

Most holy and merciful God,  
**we confess to you and to one another,**  
**and before the whole company of heaven,**  
**that we have sinned by our fault,**  
**by our own fault,**  
**by our own most grievous fault,**  
**in thought, word, and deed,**  
**by what we have done and by what we have left undone.**

We have not loved you with our whole heart, and mind, and strength.  
We have not loved our neighbors as ourselves.  
We have not forgiven others as we have been forgiven.

### ***Refrain***

*Hear us, O God,*



We have shut our ears to your call to serve as Christ served us.  
We have not been true to the mind of Christ. We have grieved your Holy Spirit. ***Refrain***

Our past unfaithfulness, the pride, envy, hypocrisy, and apathy  
that have infected our lives, we confess to you. ***Refrain***

Our self-indulgent appetites and ways, and our exploitation of other people,  
we confess to you. ***Refrain***

Our negligence in prayer and worship, and our failure to share the faith  
that is in us, we confess to you. ***Refrain***

Our neglect of human need and suffering, and our indifference to injustice  
and cruelty, we confess to you. ***Refrain***

Our false judgments, our uncharitable thoughts toward our neighbors,  
and our prejudice and contempt toward those who differ from us, we confess to you. ***Refrain***

Our waste and pollution of your creation,  
and our lack of concern for those who come after us, we confess to you. ***Refrain***

Restore us, O God, and let your anger depart from us. ***Refrain***

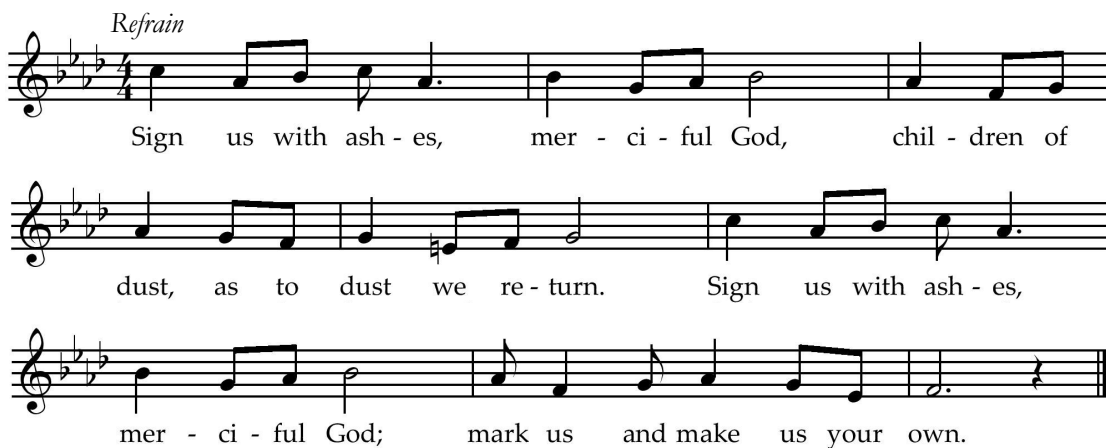
## IMPOSITION OF ASHES

Almighty God, you have created us out of the dust of the earth.

**May these ashes be a sign of our mortality and penitence,  
reminding us that only by the cross of our Lord Jesus Christ are we given eternal life;  
through the same Jesus Christ, our Savior and Lord. Amen.**

*Please join in the singing of "Sign Us with Ashes, Merciful God" VT #304 as those who desire ashes come forward.*

*Refrain*



Sign us with ash - es, mer - ci - ful God, chil - dren of  
dust, as to dust we re - turn. Sign us with ash - es,  
mer - ci - ful God; mark us and make us your own.

1. Surely, you alone can free us.  
You break the bonds of guilt and sin.  
Bracing, till we walk uprightly,  
You bolster our hope once again *Refrain*

2. Surely, you alone refine us.  
You give us grace for lives made new,  
forging through your fire and radiance  
a sacrifice worthy for you. *Refrain*

3. Surely, you alone can save us.  
You pay our price with precious blood.  
Reaching through your great compassion,  
you lift up your people with love. *Refrain*

4. Surely, you alone redeem us.  
You fill our dust with holy breath.  
Bursting from the grave in glory,  
you rise from the ashes of death. *Refrain*

Accomplish in us, O God, the work of your salvation,  
**that we may yet show forth your glory in the world.**

By the cross and passion of your Son, our Savior,  
**bring us with all your saints to the joy of his resurrection.**

Almighty God have mercy on us, forgive us all our sins through our Lord Jesus Christ,  
strengthen us in all goodness, and by the power of the Holy Spirit keep us in eternal life. **Amen.**

## OFFERING



Guests

Generosity is part of who we are as God's people. Guests can use their QR code to give via Breeze, Bethel's trusted online giving platform. Select "Member Faith Giving" to give to the general budget. Members can use their QR code to sign into Breeze to give a one-time gift or to schedule an automated donation. Online giving cards (at the name tag stations), checks, or cash may be placed in the offering plates as they are passed.



Members

**ANTHEM (11:00)** *"When the Storms of Life are Raging"* Charles A. Tindley

**ANTHEM (7:00)** *"Jesus, Savior, Pilot Me"* arr. Dan Carter

## OFFERTORY *"Ashes"* Gather #962 stanza 2

2. We of - fer you our fail - ures, we of - fer you at tempts, the  
gifts not ful - ly giv - en, the dreams not ful - ly dreamt. Our  
stum - blings, give di - rec - tion, our vi - sions wid - er  
view, an of - fer - ing of ash - es, an of - fer - ing to you.

## + OFFERTORY PRAYER

Merciful God, accompany our journey through these forty days.  
Renew us in the gift of baptism, that we may provide for those who are poor,  
pray for those in need, fast from self-indulgence,  
and above all that we may find our treasure in the life of your Son, Jesus Christ,  
our Savior and Lord, who lives and reigns with you and the Holy Spirit,  
one God, now and forever. **Amen.**



**+ THE LORD'S PRAYER**

Our Father in heaven,  
hallowed be your name,  
your kingdom come, your will be done,  
on earth as in heaven.  
Give us today our daily bread.  
Forgive us our sins  
as we forgive those  
who sin against us.  
Save us from the time of trial  
and deliver us from evil.  
For the kingdom,  
the power, and the glory  
are yours, now and forever. Amen.

**+ EL PADRE NUESTRO**

Padre nuestro que estás en los cielos,  
santificado sea tu nombre;  
venga a nos tu reino; hágase tu voluntad,  
así en la tierra como en el cielo;  
el pan nuestro de cada día, dánoslo hoy;  
y perdónanos nuestras deudas  
así como nosotros perdonamos  
a nuestros deudores;  
y no nos dejes caer en la tentación;  
mas líbranos del mal.  
Porque tuyo es el reino,  
el poder y la gloria,  
por los siglos de los siglos. Amén.

*Each week in Lent the processional cross will move towards the altar.*

**✠ SENDING ✠**

**+ BENEDICTION**

May God has called us forth from the dust of the earth,  
and claimed us as children of the light,  
strengthen you on your journey to life renewed.  
Almighty God, motherly, majestic, and mighty,  
✠ bless you this day and always. **Amen.**

**+ SENDING HYMN** *"The Glory of These Forty Days"* ELW #320

**+ DISMISSAL**

Go forth into the world to serve God with gladness;  
be of good courage; hold fast to that which is good;  
render to no one evil for evil;  
strengthen the fainthearted; support the weak;  
help the afflicted; honor all people;  
love and serve God, rejoicing in the power of the Holy Spirit.  
**Thanks be to God.**

**POSTLUDE** *"Savior, When in Dust to You"* arr. Ashley Grote

## **WORSHIP LEADERS**

Pastor Inger Hanson & Pastor Ben Schori

Assisting Minister: (11:00) Yvonne Roesel (7:00) Anton Armstrong

Readers: (11:00) Duane Everson (7:00) Bob Thacker

Ushers: (11:00) Bruce Dueffert, Al Fettig

(7:00) Greg Bussler, Cal Feine, Heather Kuehl, Harley Foster

Vocal Ensemble: Yvonne Roesel, Megen Engel, Kristi Larson, Inger Hanson, Sam Dwyer

Choir Director: Peter Schleif

Keyboards: Megan Engel

A/V Technicians: Sam Dwyer, Asher Engle, Nathan Broughton, Nathan Hoekstra

## **ACKNOWLEDGMENTS**

Cover: *“Walking on Water”* by Yongsung Kim

*“Psalm 141 from Joyous Light: Evening Prayer”* by Ray Makeever © 2000 Augsburg Fortress

*“Wisdom Parts the Way before Us”* Text: Jeannette M. Lindholm, © 2004, admin. Augsburg Fortress.

Music: RESTORATION, W. Walker, *Southern Harmony*, 1835.

*“Sign Us with Ashes, Merciful God”* Text: Mary Louise Bringle, © 2006, 2009 GIA Publications, Inc.

Music: Tony Alonso, © 2009 GIA Publications, Inc.

*“Ashes”* Text: Tom Conry, alt.; Text and music Tom Conry, © 1978, 2019, OCP. All rights reserved.

The offering prayer is written by Janet Morley, as found in her book *All Desires Known*  
(New York: Morehouse Publishing © 2006)

The benediction is modified from Sundays & Seasons 2018 and 2022.

Portions of the liturgy are reprinted from Evangelical Lutheran Worship,  
© 2006 Augsburg Fortress. Used by permission of Augsburg Fortress license SB143519

Other liturgical aids are from Sundays and Seasons © 2026

Other music is used with permission

under OneLicense.net license #A703881 or CCLI license #2666099

A stylized illustration of a landscape. On the left, there are several tall, dark green trees with black outlines. The foreground and middle ground consist of rolling hills depicted with horizontal lines in shades of green and blue. The entire scene is enclosed within a blue rectangular border.

## Land Acknowledgement

Bethel Lutheran Church stands on land  
that is the home of the Wahpekute band of the Dakota nation,  
whose people have been stewarding this land for many generations.  
We regret the injustices done to them: unkept promises, broken treaties,  
forced removal from homes, and genocide.  
So, with the Holy Spirit's help, we pledge to repair relationships  
with our Indigenous neighbors by learning about their history,  
current stories, and public policies that have impacted  
and continue to impact their lives. In doing so we commit ourselves  
to making inroads to interrupt systemic racism  
and helping to promote healing and justice.

## 2026: LENT WITH JOHN

**On Sundays in Lent, we will follow Jesus' ministry in the gospel of John.**

**On Wednesdays, we will focus on Listening to Jesus: the Farewell Discourses.**

The **midday service** begins at **11:30 am** and is followed by a light soup lunch and fellowship.

In the evening, a soup supper is offered from 5:30 pm—6:15 pm. If you would benefit from more time in prayer and meditation this Lent, Bethel's own Sarah Swan McDonald will be easing us into evening prayer with harp music. She will begin playing at 6:15 pm; **Joyous Light Evening Prayer** will begin at **6:30 pm**. After the service, lights will be lowered and she will play for another 15 min. Devotional candles will also be available to light. Please enter and depart quietly for those taking part in the extended worship option.

**Lent 1:** John 8:12-20 (with Psalm 18:25-30)

*Midweek:* John 14:1-7 [8-14]

**Lent 2:** John 9:1-41 (with Psalm 27:1-4)

*Midweek:* John 14:15-21 [22-27]

**Lent 3:** John 10:1-18 (with Psalm 23)

*Midweek:* John 15:1-11 [12-17]

**Lent 4:** John 11:1-44 (with Psalm 104:27-30)

*Midweek:* John 16:25-33

**Lent 5:** John 12:1-8

*Midweek:* John 17:1-26

## HOLY WEEK

**Palm / Passion Sunday March 29th 8:30 am & 10:30 am**

**Maundy Thursday April 2nd 11:00 am & 7:00 pm**

**Good Friday April 3rd 11:00 am & 7:00 pm**

**Easter Sunday April 5th 8:00 am, 9:30 am & 11:00 am**



1321 North Avenue, Northfield, MN 55057  
bethel@bethelnorthfield.org | 507.786.6674

