



**BAM**

Bible, Arts, & Music

**BAM – 2017-18**

# **Family Handbook**

**Please report Absences:**

**Before noon on the Wednesday of the absence – [pvig@bethelnorthfield.org](mailto:pvig@bethelnorthfield.org)**

**After noon on the Wednesday of the absence – 612-600-9828**

## BAM Family Handbook – 2017-18

Activities – pages 9-11

Acolytes – page 9

BAM FAMS – page 10

BLAST – page 10

CAT – pages 10

Chapel – page 10

Choir – page 10

Gathering Activities – page 11

Grace Notes – page 11

Half Steps – page 11

The Neutral Zone – page 11

Snack – page 11

Super Service Days – page 11

TNT – page 11

Bistro – page 12

Calendar – page 2

Daily Schedule – page 3

Map – page 6

Policies and Procedures – pages 7&8

Absences – page 7

BAM Buses – page 7

Behavior and Expectations – pages 7&8

Communication – page 8

Dismissal – page 8

Fees – page 8

Name Tags – page 9

Special Dates – pages 3&4

### ***BAM Shorthand...***

**Alleluia Choir** – Grade 1-2 Choir – Rehearsal is from 4:45-5:15.

**BAM** – Bible, Arts, and Music

**BAM Fam** – Short for Bam Family – Students are assigned to a mixed age group. They will sit together during Snack and Chapel each week and work together during Super Service Days.

**BLAST** – BAM Leaders And Servants Together – A 30 minute session for 4<sup>th</sup> and 5<sup>th</sup> graders that takes place from 4:15-4:45 on the days they are not in CAT Class. Activities will focus on leadership and servanthood.

**Carol Choir** – Grade 3-5 choir – Rehearsal is from 5:15-5:45.

**CAT Class** – Catechism Class - We focus on The Ten Commandments in Grade 4 and The Apostles' Creed in Grade 5. Sessions rotate among the two grades on a 4-6 week schedule.

**CLC** – Christian Life Center where most Bethel meals and treats are shared.

**Grace Notes** – Grade 4-5 hand chime ensemble – Rehearsal is from 4:45-5:15.

**Half Steps** – Grade 3 hand chime ensemble – Rehearsal is from 4:15-4:45 February-May.

**Jammin' Minute** – A 2-3 minute time at the beginning of Chapel. Each week a different BAM Fam will have responsibility for determining the actions to be used for that week's Jammin' Minute. They will sit together during Snack at a table marked with Jammin' Minute and their BAM Fam name and they will use that time to create their Jammin' Minute.

**KChoir** – Kindergarten Choir – Rehearsal is from 4:14-4:45.

**Kclub** – Our kindergarten activity time – a 30 minute session from 4:45-5:15

**The Neutral Zone** – Quiet Activities – Stories, Homework, Board Games, Reading, Movement

**Super Service Day** – Twice a year our BAM Fams will work together to perform several service activities in place of TNT and Kclub.

**TNT** – Trying New Things – The main activity time for BAM outside of Choir and CAT - it can include art, games, chimes, and more.

## Children's Ministry Calendar 2017-18

### Sundays

#### **September**

17 – Rally Day  
24 – 2<sup>nd</sup> Grade Parent/Child Bible Class

#### **October**

1 – 2<sup>nd</sup> Grade Parent/Child Bible Class  
8 – 2<sup>nd</sup> Grade Parent/Child Bible Class  
15 – 2<sup>nd</sup> Grade Parent/Child Bible Class  
22 –  
29 – 1<sup>st</sup> & 2<sup>nd</sup> Grade/Parent/Child Share/Save/Spend Class

#### **November**

5 –  
12 –  
19 – Advent Fair – Noon  
26 –

#### **December**

3 –  
10 – Music Festival Sunday  
17 – Sunday School Advent Worship Service  
24 – No Sunday School – Christmas Break  
31 – No Sunday School – Christmas Break

#### **January**

7 – 3<sup>rd</sup> Grade Parent/Child Prayer Class  
14 – 3<sup>rd</sup> Grade Parent/Child Prayer Class  
21 – 3<sup>rd</sup> Grade Parent/Child Prayer Class  
28 – Buried Alleluia Lesson – Grades 2-5

#### **February**

4 – 3<sup>rd</sup> Grade Parent/Child Prayer Class  
11 – Bury the Alleluia in Worship  
18 –  
25 –

#### **March**

4 –  
11 –  
18 –  
25 – Palm Sunday

#### **April**

1 – No Sunday School - Easter Sunday  
8 –  
15 –  
22 –  
29 –

#### **May**

6 –  
13 –  
20 – Last Day of Sunday School  
27 – Memorial Day Weekend

### Wednesdays

#### **September**

13 – 1<sup>st</sup> Day of BAM – 4<sup>th</sup> & 5<sup>th</sup> Grade CAT  
Orientation

20 – 4<sup>th</sup> Grade CAT

27 – 4<sup>th</sup> Grade CAT

#### **October**

4 – 4<sup>th</sup> Grade CAT

11 – 4<sup>th</sup> Grade CAT

18 – No BAM – MEA

25 – 5<sup>th</sup> Grade CAT

#### **November**

1 – 5<sup>th</sup> Grade CAT

8 – 5<sup>th</sup> Grade CAT – BAM Super Service Day

15 – 5<sup>th</sup> Grade CAT

22 – No BAM – Thanksgiving Break

29 – 5<sup>th</sup> Grade CAT

#### **December**

6 – 5<sup>th</sup> Grade CAT

13 – 4<sup>th</sup> Grade CAT

20 – No BAM – Christmas Break

27 – No BAM – Christmas Break

#### **January**

3 – 4<sup>th</sup> Grade CAT

10 – 4<sup>th</sup> Grade CAT

17 – 4<sup>th</sup> Grade CAT

24 – 4<sup>th</sup> Grade CAT

31 – 4<sup>th</sup> Grade CAT

#### **February**

7 – 5<sup>th</sup> Grade CAT – Half Steps Begins

14 – 5<sup>th</sup> Grade CAT – Ash Wednesday – 5:15 Chapel

21 – 5<sup>th</sup> Grade CAT

28 – 5<sup>th</sup> Grade CAT

#### **March**

7 – 5<sup>th</sup> Grade CAT

14 – 5<sup>th</sup> Grade CAT

21 – 4<sup>th</sup> Grade CAT

28 – No BAM – Spring Break

#### **April**

4 – 4<sup>th</sup> Grade CAT

11 – 4<sup>th</sup> Grade CAT – BAM Super Service Day

18 – 4<sup>th</sup> Grade CAT

25 – 4<sup>th</sup> Grade CAT

#### **May**

2 – 5<sup>th</sup> Grade CAT

9 – 5<sup>th</sup> Grade CAT

16 – 5<sup>th</sup> Grade CAT

23 – 5<sup>th</sup> Grade CAT – Last Regular Day of BAM

30 – 5<sup>th</sup> Grade CAT Class Finale

### **Special Dates to Note!**

5<sup>th</sup> Grade Holy Communion Retreat – October 27&28, 2017

4<sup>th</sup> Grade Holy Worship Retreat – March 11, 2018

3<sup>rd</sup> Grade Holy Baptism Retreat – April 22, 2018

## Daily Schedule and Special Day Schedules

### Daily Schedule

- 2:30 – Prairie Creek Dismissal
- 3:15 – Greenvale and Sibley Dismissal
- 3:20 – Bridgewater Dismissal
- 3:30 – Arrival, Check In, Snack, and Gathering Activities
- 3:45 – Call to Chapel, Bathroom Stop, Gathering Music
- 3:50 – Chapel begins
- 4:15 – K-Choir
  - Grade 1-2 – TNT
  - Grades 3 – The Neutral Zone or 1/2 Steps (February –May)
  - Grades 4-5 – CAT or BLAST
- 4:45 – K-Kclub
  - Grade 1-2 – Choir
  - Grade 3-5 – TNT
- 5:15 – K-Grade 2 – The Neutral Zone
  - Grade 3-5 – Choir
- 5:45 – Dismissal

### Super Service Days – November 8 and April 11

- 3:30-4:15 – Same as regular schedule
- 4:15-4:45
  - K-Grade 2 – Choir
  - Grade 3 – The Neutral Zone or Half Steps (April 11 only)
  - Grades 4 & 5 – BLAST or CAT
- 4:45-5:15 – Super Service Activity Time
- 5:15-5:45
  - K-Grade 2 – The Neutral Zone
  - Grades 3-5 – Choir

### Ash Wednesday Schedule – February 14

- 3:30 – Arrival, Check In, Snack, and Gathering Activities
- 3:45 – K – Choir
  - Grades 1-2 – TNT – Art or Games
  - Grade 3 – The Neutral Zone or Half Steps (April 11 only)
  - Grades 4 – BLAST
  - Grade 5 – CAT
- 4:15 – K – Kclub
  - Grades 1-2 – Choir
  - Grades 3-5 – TNT – Art, Chimes, or Games
- 4:45 – K-Grade 2 – The Neutral Zone
  - Grades 3-5 – Choir
- 5:15 – Family Lenten Vespers
- 5:45 – Dismissal

**Last Day Schedule – May 23**

3:30 – 3:50 – Same as regular schedule

3:50 – K – Kclub

Grades 1-3 – TNT

Grade 4 – BLAST

Grade 5 – CAT

4:30 – K-Grade 5 Thank You song rehearsal

4:45 – End of Year Chapel/Thank You Celebration

5:00 – Ice Cream Trough

5:30 – Early Dismissal

**5<sup>th</sup> Grade CAT Finale – May 30**

2:35 – Prairie Creek Dismissal

3:15 – Greenvale and Sibley Dismissal

3:20 – Bridgewater Dismissal

3:30 – Arrival, Check In, and Snack

3:45 – CAT Class final lessons and Review

5:00 – 5<sup>th</sup> Graders join Director of Youth Ministries for a preview of 6<sup>th</sup> Grade Connections

Parents arrive for a special session with Director of Children's Ministries

5:30 – Students and Parents unite for a special closing ceremony

5:45 – Dismissal

**BAM Locations – See map on the following page**

**BLAST** – Youth Room

**Bus Drop Off** – Door #1 – East Parking Lot

**CAT Class** – #54 and #55

**Chapel** – Sanctuary

**Check In** – Tables in the east narthex

**Check Out** – Dean Tables in the east hallway.

**Chime Rehearsals** – #51

**Choir Rehearsals** – East Pod

**Kclub** – #44

**Name Tag Pick Up** – Tables in the Narthex

**The Neutral Zone** – Library, Center Pod, and Rooms 53 & 54

**Snack** – Christian Life Center (CLC)

**Storage of Belongings**

Kindergarten – Room #44

Grades 1&2 – Center Pod

Grades 3-5 West Hallway and Coat Room across from the CLC

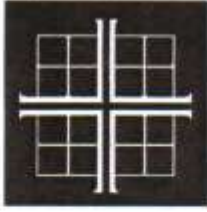
**TNT Art** – Room #52

**TNT Action** – #61A and 61B

*At 5:45 all students will be picked up in the following locations:*

K-Grade 2 – Center Pod

Grades 3-5 – East Pod

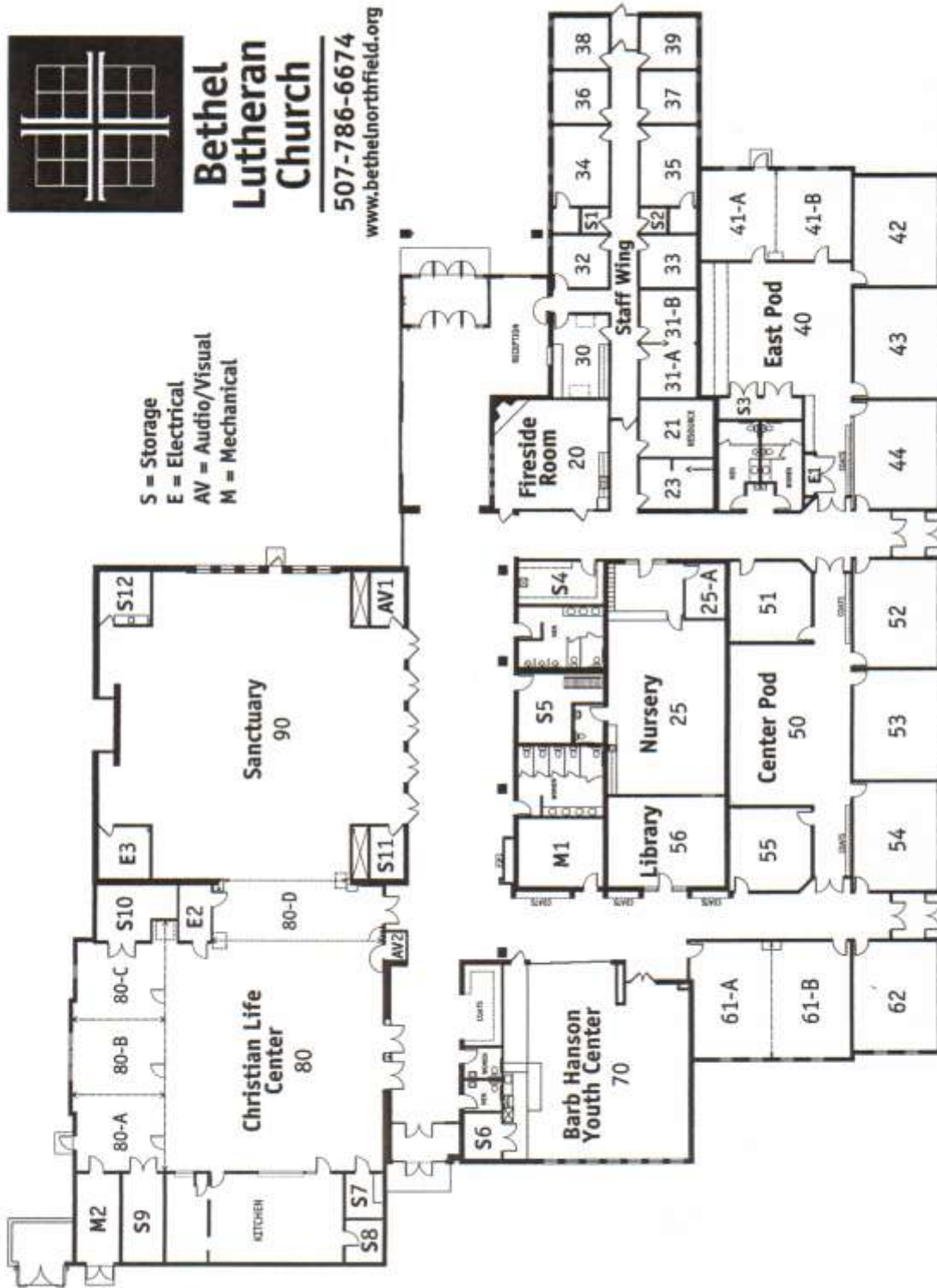


# Bethel Lutheran Church

507-786-6674

[www.bethelnorthfield.org](http://www.bethelnorthfield.org)

S = Storage  
E = Electrical  
AV = Audio/Visual  
M = Mechanical



## **BAM POLICIES AND PROCEDURES**

### **Absences**

As soon as you know that your child will be absent on any given BAM date, please contact us to let us know – preferably before noon on the day of the absence.

Around noon each Wednesday, we send an email to our BAM Bus Shepherds to make them aware of who has called in absent for that date. If your child's absence is not noted on this email and he/she does not get on the bus, our bus shepherd must then try to track your child down at school. If the child is not at school, the shepherd then contacts us at Bethel, and our volunteers must then try to contact someone from the emergency numbers you provide on your registration packet. All of this can take time that could be better spent with the children. Your cooperation with our absence procedures makes a huge difference in our afternoon. Thank you!

Absences should be reported to:

Before noon on any given Wednesday - 507-786-8878 or [pvig@bethelnorthfield.org](mailto:pvig@bethelnorthfield.org)

After noon on any given Wednesday – 612-600-9828 (Pam's Cell Phone)

### **BAM Buses**

Through the generosity of our members and visitors who contribute to the general fund of the church budget with their regular contributions during Sunday morning offering and Simply Giving (our automated giving program), we are blessed to be able to provide bus transportation to students from Bridgewater, Greenvale, Prairie Creek, and Sibley schools. At the three public schools in Northfield, at the end of the day, our BAM students get on a Bethel Bus which then transports them to Bethel. Prairie Creek students will take their regular buses to the Middle School where they will then transfer to the Bethel Bus. At all three elementary schools and at the middle school, a Bethel volunteer serves as a Bus Shepherd, making sure that all of our students get on the bus and checking on any absences with the school office. Children must indicate on their Children's Ministry Registration Packet whether or not they are planning on riding the Bethel Bus each week and from which school they will be coming.

### **Student Behavior and Expectations**

#### **Gentle – Safe – Respect – Fun**

This is our motto at BAM. Any time a behavior is questionable, we help the student(s) check the behavior against this motto. Is it gentle? Is it safe? Is it respectful? Is it fun? For everyone involved?

With over 120 students participating in BAM each week, it is necessary that we all, including parents, encourage and remind our students regularly of the expectations we have for their behavior. Please do all you can any time you are at Bethel with your child to reinforce and help them remember this motto.

Thank you for your help with keeping our motto and these expectations before our students during the entire year. It will benefit them, the program, and the experience of everyone who interacts with them.

#### **General Guidelines for BAM Participants**

1. Everyone participates in all of the activities as they are scheduled.
2. When a leader's hand goes up, everyone else's hand goes up, and mouths become quiet.
3. When a leader is speaking and you would like to get his/her attention, raise your hand and wait to be called on.
4. Do not leave any of the activity areas; Snack, CAT, BLAST, Choir, Chimes, Kclub, The Neutral Zone, Art, or Action, without the permission of a leader.



5. Do not leave the building without the permission of a leader.
6. Anyone leaving before 5:45 must be signed out by a parent or other adult with one of the deans.
7. Do not use the phone without the permission of a leader.
8. Personal items need to be stored in backpacks or pockets until 5:45.
9. Respect the building and its contents.
10. Respect all of our leaders
11. Respect each other.
12. Exhibit good sportsmanship at all times
13. Let our BAM motto guide all of our actions and words.
14. Everyone wears a nametag at all times.

## Communication

Weekly emails are sent throughout the year to keep everyone informed and up to date. Choir and Chime Ensemble performance dates and details are included as well as any and all information Children's Ministry related. Our weekly email is the way in which we notify you of changes or new events as well as where our volunteer needs lie. Please at least skim this each week so that you are aware of changes in the schedule and upcoming events.

## Dismissal

There are several options for when your child may be picked up from BAM each week. You are welcome to take them at 4:15, 4:45, 5:15, or 5:45. We ask that you refrain from interrupting an activity session or rehearsal by picking them up at a time other than those stated. If you arrive after one of these stated times, unless it is an emergency, you will be asked to wait until the next passing time to collect your child. **Please schedule appointments, etc. with the passing times in mind.** Thank you for your cooperation with this policy. It is greatly appreciated!

Dismissal Policies and Procedures:

1. The South Doors to the building will be locked up until 5:30 each day. If you are picking your child up before 5:45, you will need to enter through the East or West doors of the building.
2. If you do pick your child up before 5:45 each week, you will be required to sign them out with one of the deans in the east hallway before they are allowed to leave. Please do not instruct your child to meet you in the parking lot as they will not be allowed to do so.
3. If your child lives close by and is going to ride bike or walk home, you will need to provide written notice prior to the first day of BAM. This can be emailed to the Director of Children's Ministries.
4. If your child stays for the entire BAM time frame, they will not be released from their last activity until a parent or older sibling comes for them at 5:45.
5. K-Grade 2 students should be picked up at the east doors of the Center Pod.
6. Grade 3-5 students should be picked up at the doors of the East Pod.

## Fees

We do not charge a fee for our weekly Children's Ministry programming. The cost of these ministries is significant - Sunday School curriculum, general supplies, BAM snack and bus, and of course the mortgage, maintenance, and utility bills associated with our wonderful building. These expenses and many more are all funded through the regular giving of our members and visitors. We encourage all families with children in our programming to support our ministries through time, talent, and treasure. You are invited to volunteer your time and talent in a variety of ways. Weekly emails will let you know of upcoming volunteer opportunities. You can contribute to the general fund of our congregation by giving weekly to the offering collection in worship services or by sending your contribution in to the church office. Contact our Director of Finance, Nichole Porath, to hear details on how you can have funds automatically transferred from your account to Bethel's through our Simply Giving program. Thank you for giving of your time, talent, and treasure to support the ministries of Bethel Lutheran Church. We couldn't do it without you!

## **Name Tags**

Name tags are a vital tool for helping us keep track of our Bammers each week. Each child will have a name tag that they are to pick up as they arrive and turn in when they leave each week. These name tags give all of our staff and volunteers the opportunity to call each child by name. Please do all that you can to help your child remember to turn their name tag in when you pick them up each week. This is especially vital if you pick them up before 5:45.

## **BAM ACTIVITIES**

### **Acolytes**

On Sundays during the weeks when their grade is in CAT Class, our 4<sup>th</sup> and 5<sup>th</sup> Graders are invited to serve as acolytes during worship. Students indicate their desire to serve as an acolyte in the Children's Ministry Registration Packet. Acolyte schedules are sent out at the beginning of each CAT unit. Children do not need to participate in CAT Class in order to acolyte. All 4<sup>th</sup> and 5<sup>th</sup> Graders are invited to participate in worship in this way.

\*Parents are asked to assist their child in getting ready to serve as an acolyte at the services when their child is assigned. Instructions are as follows:

#### **Acolyte Parent Instructions**

1. Arrive in the usher's closet (southwest corner of the sanctuary) 5-10 minutes before the service.
2. Help the acolytes find and put on an acolyte robe that fits.
3. Decide which acolyte will light the candles and which one will extinguish them.
4. Check with one of the pastors to see if there are any changes for the day. (There rarely are but it's good to check.)
5. Check the length of the wick on the candle lighter. If it is 4" or less, replace it with a new wick, located on the shelves in the closet. The candle lighters are hanging behind the door in the usher's closet.
6. Light the candle lighter for the acolyte who is carrying it just prior to when they enter the sanctuary to process with the pastors.
7. Verbally walk through the following duties with the acolytes:
  - a. They will process in at the Pastors' direction after the Call to Worship and during the first hymn.
  - b. The acolyte who will light the candles goes in first. The other one follows.
  - c. The acolyte who is not lighting the candles distributes the baskets to the ushers at the time of the offering.
  - d. The acolyte who lights the candles will receive the offering baskets from the ushers and place them on the credence table.
  - e. At the end of the service the acolyte who did not light the candles will extinguish the candles and return the lighter to the closet.
  - f. Robes should be returned and hung up in the usher's closet at the end of the service.
8. When communion is served, the acolytes go forward to the altar when the congregation sings "The Lamb of God." If the acolyte is not yet taking communion, they should keep their hands at their sides and the pastor will bless them. Then each acolyte goes to one of the communion glass stations. They hold the tray for the used cups. When one tray is full they switch trays with the empty one on the table next to them. At the end of communion, the trays of used cups may stay on the table next to them.
- Reassure the acolytes that the pastors and assisting minister will help to remind them of where to go and what to do during the service.
- If you would like to, often the parents of the acolytes will sit with his/her family in the row right behind the pastors and acolytes on the right hand side of the sanctuary. That way you are able to troubleshoot and prompt if something arises.
- If for some reason the scheduled acolyte does not show up, please look around the sanctuary for another 4<sup>th</sup> or 5<sup>th</sup> grader who might be willing to fill in.
- All 4<sup>th</sup> and 5<sup>th</sup> grade CAT students will receive thorough acolyte instructions on the first day of BAM.

Please contact the Director of Children's Ministries with any questions or concerns.

**BAM FAMS** – Each student will be assigned to a mixed age small group of 8-10 other students. Their BAM Fam (short for Family) will sit together during Chapel and work together during Super Service Wednesdays.

**BLAST** – BAM Leaders And Servants Together – Activities for Grades 4 & 5

BLAST will run concurrent with CATEchism Class. When 4<sup>th</sup> Grade CAT is in session, 5<sup>th</sup> Graders will be in BLAST. When 5<sup>th</sup> Grade CAT is in session, 4<sup>th</sup> Graders will be in BLAST.

BLAST will run from 4:15-4:45 and involve hands-on lessons/sessions that will allow these students to experience and learn about their options for leading and serving at BAM, in the church, and in the world. 4<sup>th</sup> Graders will focus on the Fruits of the Spirit and Creation Care. 5<sup>th</sup> Graders will focus on “Bucket Filling.”

### **CAT Class**

Catechism Class for grades 4 and 5 is held from 4:15-4:45 each week and taught by Pastor Tim McDermott and Pam Vig, Director of Children's Ministries. Our 4<sup>th</sup> Graders study The Ten Commandments and our 5<sup>th</sup> Graders focus on The Apostles' Creed. Our CAT Schedule for the year is as follows:

September 13 - 1st Day of BAM - All 4th and 5th graders will attend a special CAT/BLAST orientation with Pastor Tim and Pam.

September 20-October 11 - 4th Grade CAT - 5th Grade BLAST

October 25-December 6 - 5th Grade CAT - 4th Grade BLAST

December 13-January 31 - 4th Grade CAT - 5th Grade BLAST

February 7-March 14 - 5th Grade CAT - 4th Grade BLAST

March 21 - April 25 - 4th Grade CAT - 5th Grade BLAST

May 2-May 23 - 5th Grade CAT - 4th Grade BLAST

May 30 - 5th Grade CAT Finale

\*Students may participate in CAT Class without participating in the full BAM schedule. They simply come to BAM only on the dates that their grade is in session and get picked up at 4:45 when CAT Class is concluded.

### **Chapel**

Every week during BAM, our pastors and our Director of Music and Worship, lead a 20 minute child friendly chapel service. We begin with fun and lively Gathering Music and end with a rousing Sending Forth. 5<sup>th</sup> Graders are invited to serve during BAM Chapel as readers, acolytes, and A/V room controllers. They were able to sign up for these roles in their Road Map Registration Packet and will be able to sign up for them during the CAT Orientation on September 13 as well.

### **Choir**

The M in BAM stands for Music. We have three vocal choirs that rehearse on Wednesday afternoons during BAM. Our Carol Choir is made up of Grade 3-5 students. Our Alleluia Choir consists of Grade 1- 2 students. Kristin Kivell directs our Carol and Alleluia Choirs. Our kindergarten students participate in KChoir. Christina Schwietz directs our K Choir.

There are no alternate activities for students during choir rehearsal time. All children who are present will attend their grade's choir rehearsal. Students who do not want to participate in choir may be picked up prior to their rehearsal time. Rehearsal times are as follows:

- Kindergarten Choir – 4:15

- Alleluia Choir - Grades 1-2 – 4:45
- Carol Choir - Grades 3-5 – 5:15

Please be aware that our children's choirs sing in our Sunday morning worship services regularly during the school year. It is important that everyone who rehearses is also present for the performances as everyone has an important role and when someone is missing, that hole is not easily filled.

## **Gathering Activities**

Each week when they arrive at Bethel, once they have stowed their gear, students will pick up their name tags, check in with the deans, and move into the CLC for snack.

## **Grace Notes**

Grace Notes is the hand chime ensemble for our grade 4-5 students. They rehearse during our TNT (Trying New Things) time frame – usually from 4:45-5:15. 4<sup>th</sup> Graders rehearse in the fall and 5<sup>th</sup> Graders rehearse in the spring. Grace Notes offers anthems several times throughout the year during worship. It is imperative that participants in Grace Notes are here for weekly rehearsals and performances as each student has specific notes to play.

## **Half Steps**

Half Steps is our 3<sup>rd</sup> grade hand chime ensemble. They rehearse from February – May in place of our Neutral Zone activities – usually from 4:15-4:45. It is their first opportunity to start hand chimes and trains them for Grace Notes the following year. Half Steps usually offers an anthem in worship toward the end of the school year. It is imperative that all participants in Half Steps are present for weekly rehearsals and performances as each student has specific notes to play. When a student is missing, their notes are missing.

We are extremely fortunate to have Bethel member and St. Olaf handbell instructor, Jill Mahr, serving as our Grace Notes and Half Steps director. The skills our young chimers hone under her tutelage will serve them all of their lives.

## **The Neutral Zone**

The Neutral Zone is an activity time for our K-Grade 3 students. It takes place from 4:15-4:45 for Grade 3 and from 5:15-5:45 for Kindergarten-Grade 2. The Neutral Zone is designed as a quiet space in the afternoon for children to read, do homework, have a story read to them, play board games, or participate in quiet movement activities.

## **Snack**

Snack is one of the more popular activities at BAM. Snack is served cafeteria style in the CLC (Christian Life Center aka Bistro Room). Snack usually consists of water, a granola bar, and fruit, cheese, or another option. There is a place to indicate food allergies in the Children's Ministry Road Map Registration Packet. We rely on you to keep us apprised of any issues with food for your child.

**Super Service Wednesdays** – Twice during the year we have a Super Service Wednesday. On these two dates, students will work with the other members of their BAM FAM to perform one or more service activities. See the Special Date Schedules on pages 3 & 4 for specific dates.

## **TNT – Trying New Things**

TNT is a 30 minute time frame that consists of Action or Art activities. Students rotate by grade each week. One week they will have an art activity. The next they will have an action or game activity. Each activity session will be tied to a specific Bible story. We always need an extra pair of hands or two to help in these areas. Please contact us to volunteer.

## **BETHEL BISTRO**

Many BAM Families choose to end their afternoon with a tasty home cooked meal together with other Bethel friends and family at the Bethel Bistro in the CLC.

- Serving Times – 5:30-6:30
- Cost - \$3.00 per person

\* Parents are asked during Bistro time to keep their children grade 5 and younger in their care within the walls of the CLC or in the care of our staff in the Bistro Game Room or in the Nursery. See details below.

### **Bistro Game Room - Kindergarten-Grade 5 Students Welcome!**

Every Wednesday during Bistro, the Center Pod of our education wing is staffed by St. Olaf students. The Bistro Game Room is provided to give our Kindergarten to Grade 5 students something to do once they have inhaled their food and are waiting for their parents to finish visiting. Game Room Guidelines are as follows:

- Game Room Hours – 5:45-6:45 PM During Bethel Bistro
- Children must be accompanied to and from the Game Room by a parent or other responsible adult.
- Children must be signed in and out by a parent or other responsible adult.
- Children are encouraged to bring their own games, books, homework, etc, if they choose.
- Children will be allowed to use the restroom in the East Hallway.
- There will be no food or drink allowed in the Game Room.
- Please be on time to pick your child up from the Game Room.
- At 6:45, any children still in the Game Room will be accompanied by our game room staff to the location of their parents.

### **Wednesday Nursery Care**

Every Wednesday when BAM is in session our Nursery will be staffed from 3:30-8:15 for the children of parents who are volunteering or participating in an on site Bethel activity. The nursery is open to children who are not yet in kindergarten. Full policies and procedures for our nursery are available on our website at [www.bethelnorthfield.org](http://www.bethelnorthfield.org) or in the nursery.

**We can't fix that of which we are unaware.** Please don't hesitate to contact Director of Children's Ministries, Pam Vig, with any questions, concerns, or even general complaints. We want our BAM experience to be great for everyone – our kids, our volunteers, and our families. Please let us know immediately if there are issues or concerns that are negatively impacting your child's or your experience.

### **Children's Ministry Staff**

Pam Vig, Director of Children's Ministries  
507-786-8878  
[pvig@bethelnorthfield.org](mailto:pvig@bethelnorthfield.org)

Juley Jenkinson, Early Childhood Coordinator  
[jjenkinson@bethelnorthfield.org](mailto:jjenkinson@bethelnorthfield.org)

Krista Sorenson, Children, Youth, and Family Ministry Assistant  
[ksorenson@bethelnorthfield.org](mailto:ksorenson@bethelnorthfield.org)